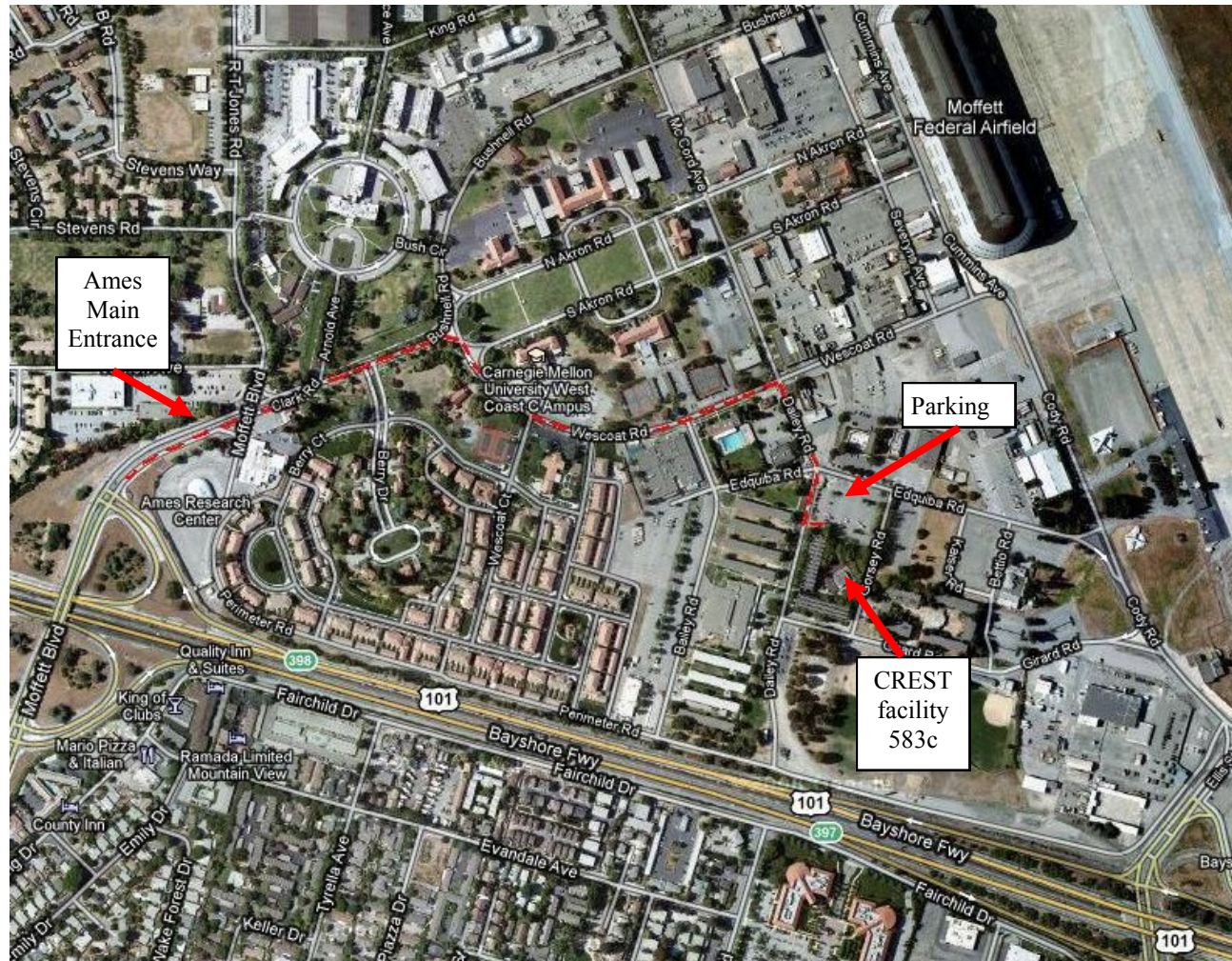


Santa Clara University Robotic Systems Laboratory Center for Robotic Exploration and Space Technologies (CREST) Facility



The SCU labs, classrooms, ops center and offices are in the CREST facility, which is Building 583c in the Ames Research Park. The building is inside the Moffett Field fence, but is open to the public. You will need to go through a gate with a guard. It will look like a fairly high-security operation given the guards, the cones, the signs stating the “threat level”, etc. But as it turns out, all you need to do is show them your photo id (driver’s license preferred, everyone in the car may need to show one) to get in. They may ask you where you’re going; if so, just tell them “Building 583c.”

Directions to Ames Research Park can be found at: <http://www.nasa.gov/centers/ames/home/directions.html>

Once you enter the main entrance on Moffett Blvd, continue straight. Then, veer to the right onto Wescoat Rd. Follow Wescoat Rd until you reach the first stop sign. Make a right onto Dailey Rd. Continue straight at the next stop sign (Edquiba Rd) and make a left into the CREST parking lot.